

St Anns

Area Committee Executive Summary

September 2012

Introduction

St Anns is an inner city housing area located approximately 1.7 miles from the Nottingham Town Centre. St Anns Ward lies within Area Committee 6 to the East of Nottingham City. At the time of the 2001 census, which is still some of the most thorough information available, there were a total of 14,840 people living in a 7940 households (2005 estimate) in the St Anns boundaries, according to the Office for National Statistics.

There are a larger number of people between the ages of 16 -29 and 30- 44 than across the Nottingham City as a whole, whilst the number of children and young people under the age of 15 is slightly lower than the City figures. This age profile suggests that the area is likely to contain a higher number of working age people than the City average As a community, St Ann's estate experiences extreme social need and local deprivation.

As part of this, Health deprivation is currently a particular major problem for the residents which include the lowest life expectancy in particular for females than the average across the City. Some examples of poor health include; high incidences of coronary heart disease and stroke, of certain cancers in the older population, respiratory disease and poor diet amongst other.

Ward priorities – Progress update

THEME	PRIORITY	KEY ACTIONS
SAFER	<ul style="list-style-type: none"> • To reduce antisocial behaviour – including drinking, drug taking and dealing particularly on parks and open spaces • More Neighbourhood Watch Schemes 	<ul style="list-style-type: none"> •Policing Priorities set with local Community representatives – 7th November 2012 •Magistrates – question and answer session – 7th November 2012 •Neighbourhood Alert •High patrols are being undertaken for alcohol confiscation
NEIGHBOURHOODS	<p>To improve the environment - reduction of dog fouling, Improving local parks. Improve appearance of estate Resolve derelict empty properties and buildings.</p>	<ul style="list-style-type: none"> •NCH, NDO and CPO's are working together to identify bins and untidy gardens. Mini Week of Action scheduled on Cromer Road, Chandos Street and Ransom Rd – Date TBC • Councillors, NCH and NDO are currently In the process of reviewing the Area Capital Fund and identifying priorities with Community Groups. •Regular Councillor Ward Walks
FAMILIES	<p>More volunteers and activities for young people at local venues</p>	<ul style="list-style-type: none"> •King Edwards Park Event and Marmion Park Event •The Renewal Trust continue to recruit and support local volunteers to work in the community
HEALTH	<p>Raising awareness of health and activities, with a key focus on Domestic Violence</p>	<p>Health Specialist has now joined NAT meetings Area 6 Chair and Vice Chair are leading on a number of Themed Networking Forums; Children & Young People; Domestic Violence; Health & Well being and Employment & Training. Dates will need to be confirmed.</p>
WORKING	<p>More Jobs, Training and volunteering opportunities More business investment</p>	<p>Area 6 Chair and Vice Chair are leading on a number of Themed Networking Forums; Employment & Training. Dates will need to be confirmed.</p>

Community Engagement

Events Delivered

Event	Lead Partners	Date/Time	Venue
Nottingham City Homes – Tenants Participation Event	Nottingham City Homes	Wed 5 th September 2012	Council House
Peer Review- Community Module	NDO, Home Office & CDP	Fri 7 th September 2012	•Russell Youth Club •The Chase Neighbourhood Centre
Marmion Park Event	Local Volunteers & Renewal Trust	Sat 14 th September 2012 1.00pm till 4.30pm	Marmion Park
Blue Bell Hill Community Centre – Halloween Event	Blue Bell Hill Management Committee, Local Councillors and NDO	Fri 26 th October 2012 – 6.30pm till 9.00pm	Blue Bell Hill Community Centre's Management Committee
Christmas Lights Switch On Event – St Anns	NDO & Local Schools and Volunteers	Monday 3 rd December 2012	St Anns Police Station and The Chase
Christmas Lights Switch On Event – Sneinton Market Square	NDO – Wendy Honeyman –Smith Sneinton Community Traders & Andrew Miller Leisure Centre Manager & Partner	Friday 7 th December 2012	Sneinton Market Square

Community Engagement

Ward Walks

Area/Estate	Date/Time	Meeting Point
Northampton Street/ Bullace Road	Tuesday 25 th September 2012	Corner of Southampton Street and Blue Bell Hill
Pym Street / Marmion Estate and Leighton Street	Tuesday 23 rd October 2012	Corner of Gordon Road and Beecham Avenue

Community Meetings

Group	Date	Venue
Home Office Peer Review	7 th September 2012	The Chase Neighbourhood Centre
Local Issues Meeting – Community	7 th November 2012- 6.30pm till 8.30pm	St Anns Valley Centre
Budget Consultation	20 th November 2012- All day	St Anns Valley Centre

Finance

Ward Councillor Budgets

Total Amount allocated this period £500.00

Budget Remaining Unallocated £31,906 (inc. of 2012-2013 allocation)

Area Capital Fund

Total Amount allocated this period £14,032.40 (Delegated Authority to follow)

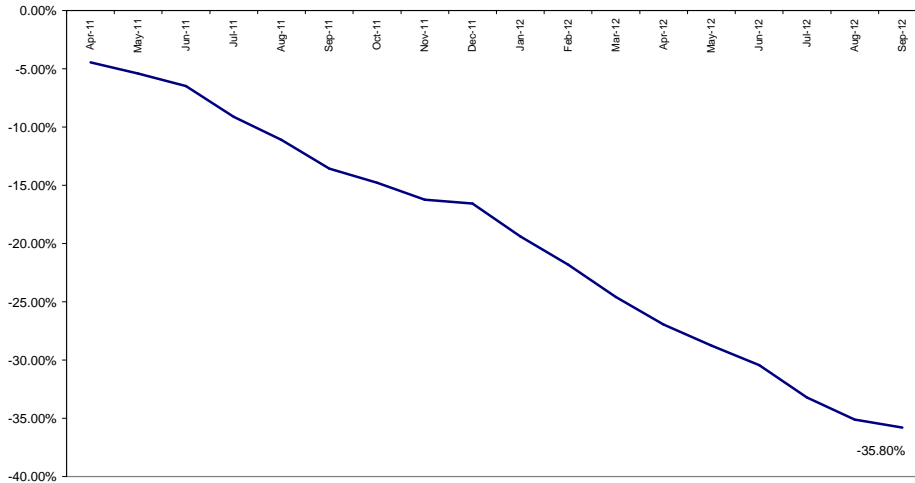
Budget Remaining Unallocated £145,906 (inc. of 2012-2013 allocation)

Others – Section 106, NCH Environmental, Other Funding

NCH Environmental Scheme 2012-13 £164,474

Crime

All Crime in St Anns -
% Change over 2010/11 Baseline (Rolling 12 Month)



*Refers to September 2012 compared to September 2011

•**All Crime** in St Anns is showing a reduction compared to September 2011. In addition, Year to Date figures indicate that All Crime is down by 27% compared to the previous year.

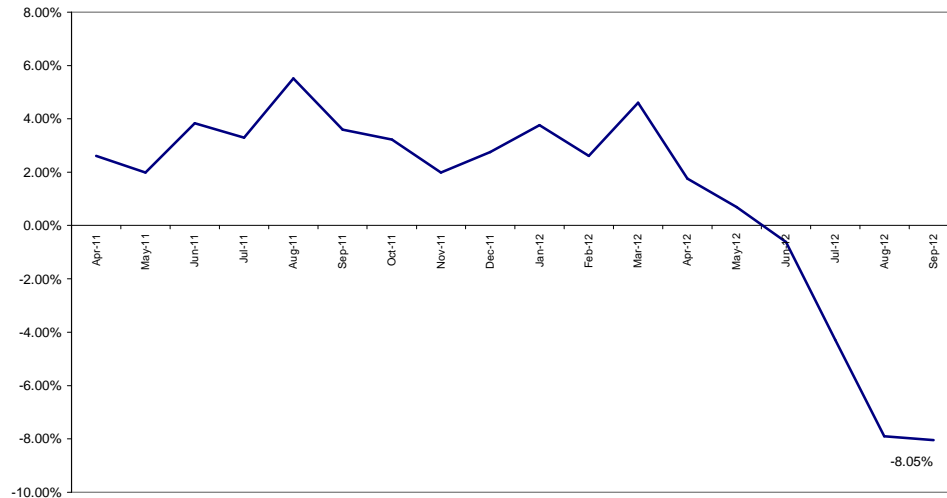
•The above Baseline graph indicates that All Crime in St Anns has decreased by 36% against 2010/11. The graph also emphasises the general decline in All Crime, indicating that figures for this month are in line with those observed previously.

•The Rate of All Crime per 1000 of the population for St Anns falls below the City average. However St Anns does have the second highest rate of **'Violence'** in the City, and the third highest Rate of **'Criminal Damage'** and **'Theft from Person'**.

Ward Contact: Mark Stanley

All ASB

All ASB in St Anns -
% Change over 2010/11 Baseline (Rolling 12 Month)



Red		
Amber		
Green*	2 fewer calls	-2.17%

*Refers to September 2012 compared to September 2011

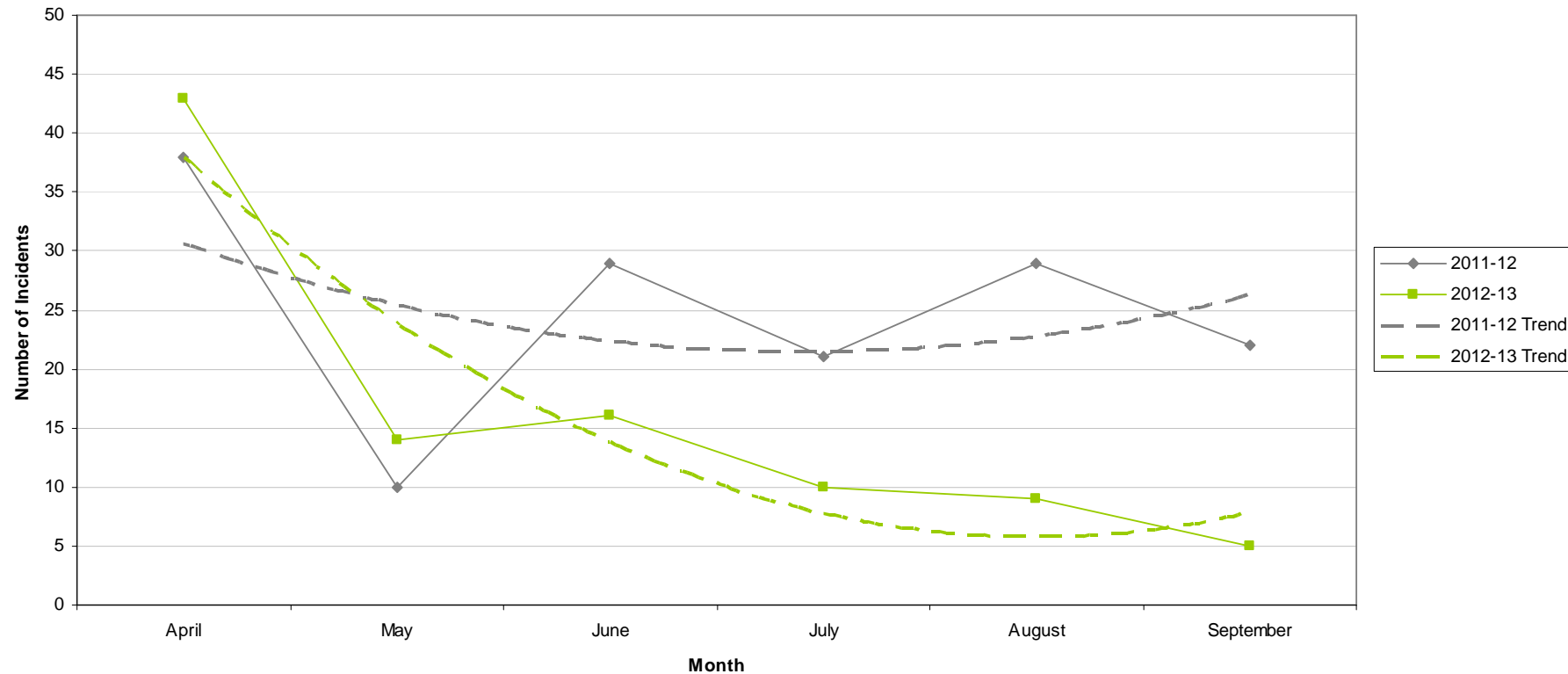
- For the month of September 2012 compared to September 2011, St Anns is showing a **reduction of All ASB calls**.
- By Year to Date, St Anns has experienced a further **reduction in All ASB calls of -21%**. The Year to Date performance of the Division as a whole was at -31% at the end of September 2012.
- Over a 2010/11 Baseline St Anns is showing a reduction of -8%. The graph also highlights the steady decline in ASB calls over the past 6 months.
- Of all ASB calls received for St Anns in September 2012 the majority (73%) were categorised as **'Nuisance'**. This is consistent with the Division as a whole. Of the remaining calls 17% were classed as **'Environmental'** and 10% were classed as **'Personal'**.

Graffiti Reports

RED		
AMBER		
GREEN	17 fewer reports	-77%

- All data refers to a comparison with the previous year's month
- It is proposed that performance over time graphs be used for each indicator
- Historic data for comparison is not available for dog fouling

Incidents of Graffiti

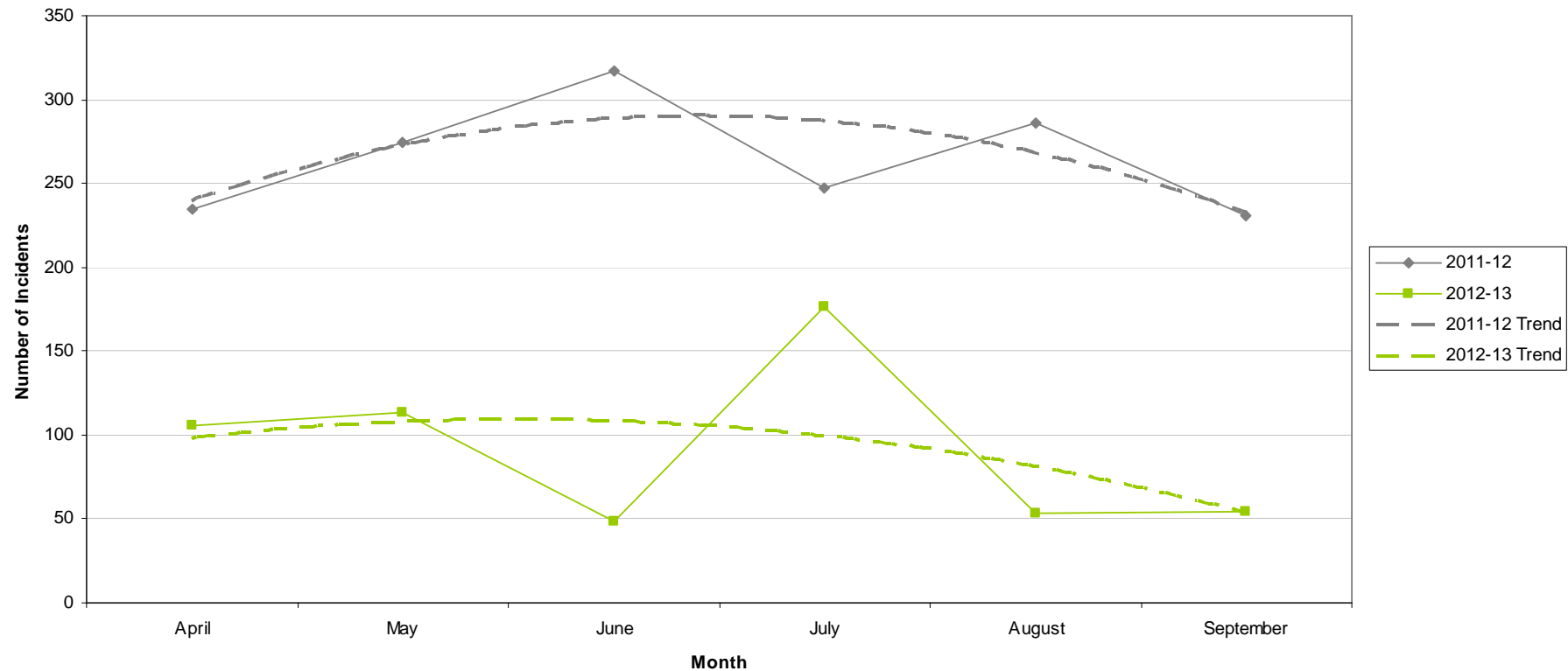


Fly Tipping

RED		
AMBER		
GREEN	177 fewer reports	-77%

- All data refers to a comparison with the previous year's month
- It is proposed that performance over time graphs be used for each indicator
- Historic data for comparison is not available for dog fouling

Incidents of Fly Tipping

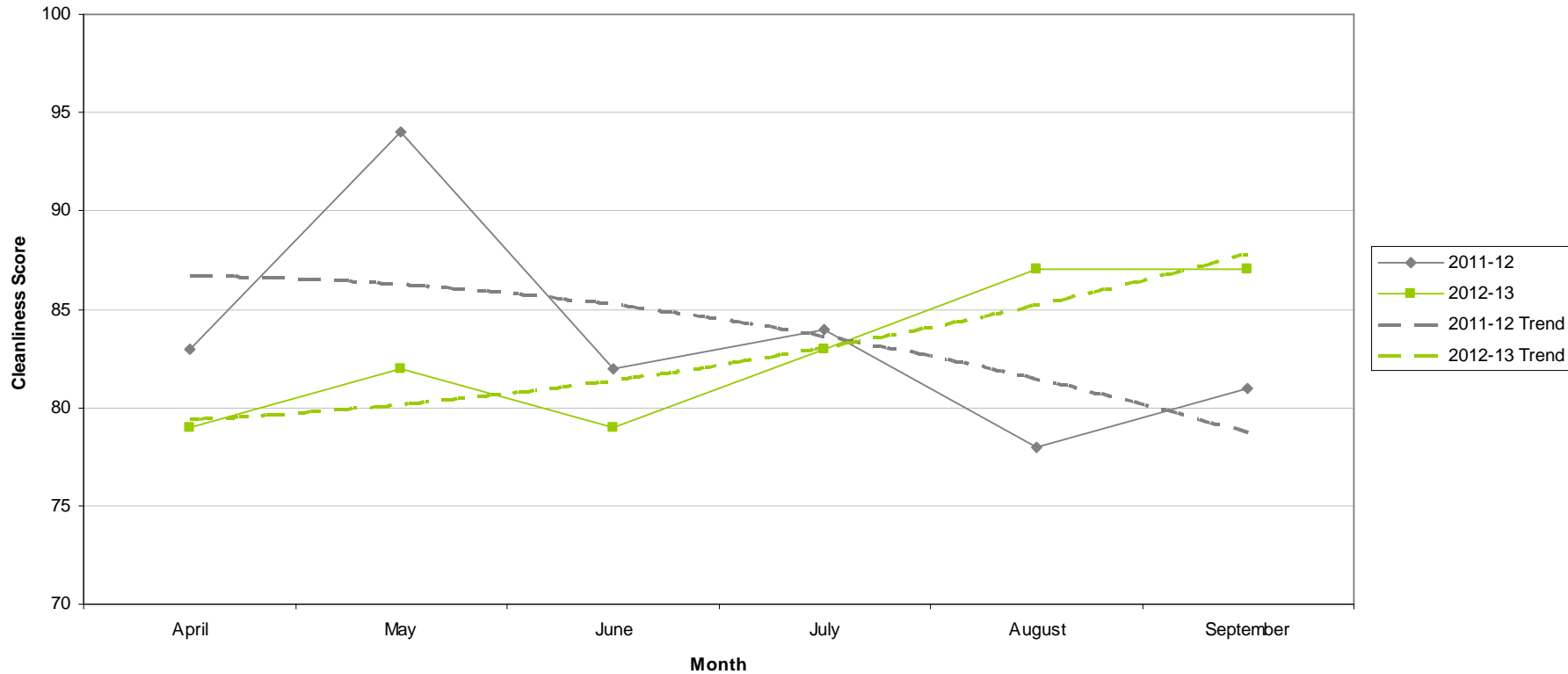


Cleanliness Index

RED		
AMBER		
GREEN	87	6 point increase

- All data refers to a comparison with the previous year's month
- It is proposed that performance over time graphs be used for each indicator
- Historic data for comparison is not available for dog fouling

Cleanliness Index



Unemployment Rate

Ward	Aug-12			Change in last month		Change in last year	
	Number	Rate	City Rank	Number	%	Number	%
Arboretum	830	7	9	12	1.5	86	11.6
Aspley	1,197	10.6	1	15	1.3	57	5
Basford	730	6.6	11	21	3	25	3.5
Berridge	1,090	7.5	6	17	1.6	115	11.8
Bestwood	989	8.7	4	-26	-2.6	-19	-1.9
Bilborough	762	7.3	7	-36	-4.5	6	0.8
Bridge	756	7.2	8	6	0.8	15	2
Bulwell	1,045	9.6	2	-4	-0.4	32	3.2
Bulwell Forest	444	4.9	15	-12	-2.6	-5	-1.1
Clifton North	381	4.3	16	-14	-3.5	27	7.6
Clifton South	506	5.8	12	12	2.4	-11	-2.1
Dales	883	7.6	5	-10	-1.1	8	0.9
Dunkirk and Lenton	262	2.4	19	-5	-1.9	-27	-9.3
Leen Valley	351	5	14	13	3.8	26	8
Mapperley	750	6.7	10	31	4.3	8	1.1
Radford and Park	776	4.1	17	-19	-2.4	36	4.9
Sherwood	552	5.1	13	-19	-3.3	-71	-11.4
St Ann's	1,242	9	3	13	1.1	29	2.4
Wollaton East and Lenton Abbey	144	1.5	20	9	6.7	4	2.9
Wollaton West	262	2.8	18	29	12.4	25	10.5

Source: ONS claimant count August 2012 (from Nomis)

Housing



St Anns Ward

Empty properties - St Anns Ward

Indicator	Current Target	2010/11	2011/12	2012/13		
		Value	Value	Value	Status	Trend
Average void re-let time for St Anns Ward	26	31.93	23.73	35.9		
Lettable voids St Anns Ward		24	25	30		
Empty properties awaiting decommission in St Anns Ward		43	6	11		

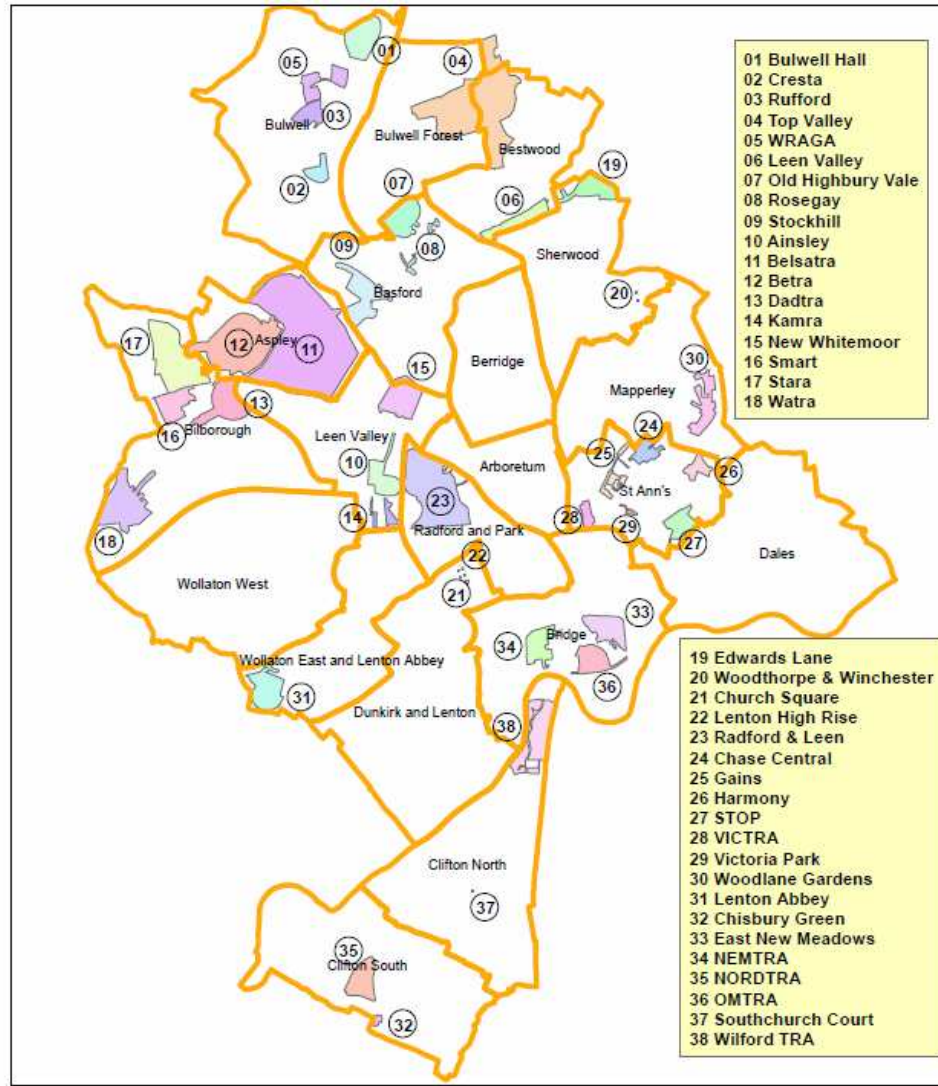
Estate star ratings (from Tenant Service Inspectors)

Indicator	2010/11		2011/12		2012/13		
	Value	Status	Value	Status	Value	Status	Trend
Estate star rating - St Anns	2 Star		3 Star		3 Star		
Estate star rating - Marmion Road	3 Star		2 Star		3 Star		

Rent Collection - St Anns

Indicator	Current Target	2010/11	2011/12	2012/13		
		Value	Value	Value	Status	Trend
Rent charged that has been collected - St Anns office area	100%	100.3%	101.4%	99.9%		

Housing



Map of Tennant and Resident Associations by Ward

Community Protection

In St Anns in the last month there were the following court outcomes

- Two injunctions: one was for noise and the other was for ASB;
- An outright possession order (eviction) for drugs; and
- A proved breach of injunction/ undertaking for noise.

Data has been received from Community Protection and where postcodes have been listed these have been geo-coded and mapped to determine the Ward. All addresses relate to the address of the Perpetrator.

FPNs are not currently available at Ward level.

Methodology

Crime Data and ASB calls have been extracted from the Police systems and mapped to ascertain which Ward they occurred in.

Due to the dates of the meetings, data for all Wards was extracted at the same time at the start of the month - and as such is not officially 'validated' data.

Where possible the most recent data is used, although for some areas this may be a month further in arrears.

Discussions continue with other agencies regarding what further data can be included.